

PROTECT OUR LAND

Challenge Duke's Plans!

➔ CarolinaLandCoalition.org



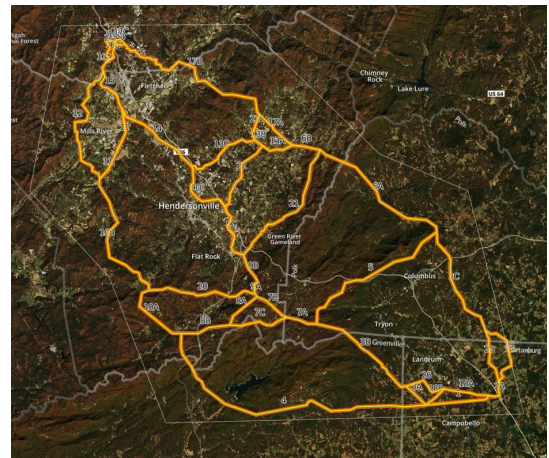
What is the Duke Energy "Modernization" Plan?

- Duke Energy is proposing to replace the current 376 megawatt coal-fired power plant in Asheville with a new natural gas plant nearly twice the size.
- **The new plant would be connected to a new substation in Campobello, SC with 45 miles of transmission lines and towers.** Multiple routes are proposed through SC and Polk, Henderson, and Buncombe Counties that would condemn property in 150' wide paths.
- **The transmission towers would stand 140' to 192' tall** and would cut through forests, farmlands, private property and communities, degrading the usefulness of the land.
- Even though the new natural gas plant would be cleaner than the old coal-fired plant, it appears to be much larger than needed, calling Duke's motives into question.*



How am I affected?

- **YOU COULD LOSE CONTROL OF YOUR LAND:** Private property on the transmission routes will be purchased or obtained by Duke Energy through eminent domain.
- The scenic mountain views, cultural heritage and recreation of our land will be compromised, impacting local tourism and economy.
- Use of land for agriculture will be limited. Natural forests and habitats will be damaged and the lines could negatively impact local water quality.
- **We will all share the cost of this \$1.1 billion dollar proposal through our increased utility rates.**



*Duke Energy's own planning documents show that the current coal plant is not used as efficiently as possible and Duke's projections for growing energy demand appear to be grossly overstated.

TAKE ACTION!

- ➔ **Submit your comments to Duke Energy before August 31st** by emailing WCTransmissionEnhancements@duke-energy.com or commenting on their interactive map at dukeenergyfoothillsproject.power-viz.com.
- ➔ **Write & Call your representatives and ask them to take a stance opposing this plan!** Go to MountainTrue's action page at bit.ly/NoDukeLines to look up your representatives and send a letter to all of them with a single click.
- ➔ **Join Carolina Land Coalition AND your local community and neighborhood efforts.** MountainTrue has partnered with Carolina Land Coalition to advocate for everyone that is affected. Visit carolinalandcoalition.org to read the position statement, get project updates, find neighborhood groups, and spread the word!

FACTS & FIGURES:

- To date, **Duke Energy has not provided adequate justification** of the necessity for this \$1.1 billion dollar investment, nor shown that their proposed alternative is the best solution and best expense of ratepayer dollars.
- **Duke should provide a full investigation of future energy needs** in the Carolinas and justification of the need for a new plant and transmission line to meet that demand.
- Duke Energy Progress and Duke Energy Carolinas **did not report the need for a new transmission line in their 2014 Integrated Resource Plan**. Why was an explanation of the demand projections not included in this report?
- The public deserves a **full account of the costs and impacts** related to their plans including an evaluation of all the costs associated with the expansion including diminished property values, lost tourism revenues and lost environmental services.
- Duke calls this a “modernization” plan, but it seems like business as usual: they plan to **build up excess capacity on their systems for a guaranteed rate of return**. Duke should be planning the size of their facilities based on serving the regional public need, NOT with an eye towards profit.
- **Duke's plans do not include low cost options to reduce demand through energy efficiency**. The targets for their energy efficiency plans remain low at only .3% of demand. Utilities around the country routinely set goals of at least 1% of demand with energy efficiency, and are meeting those goals.
- **Duke Energy needs to assure the public that any natural gas plant or infrastructure built in the Carolinas is sized to provide electricity needed in the affected region** after all renewable energy generation and energy efficiency is maximized.

Join the campaign to voice your concern! We're stronger together.

PROTECT OUR LAND - CAROLINALANDCOALITION.ORG