

PROTECT OUR LAND

Challenge Duke's Plans!

➔ CarolinaLandCoalition.org



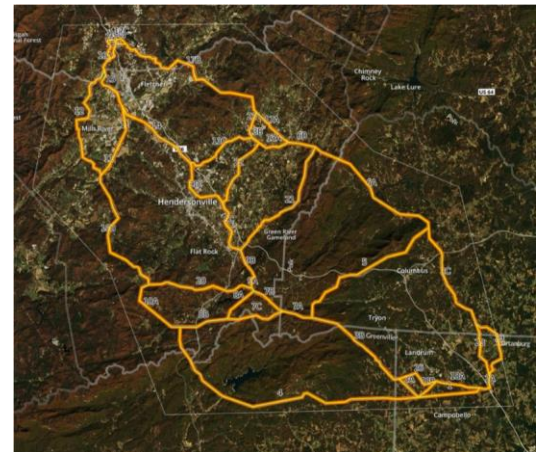
What is the Duke Energy "Modernization" Plan?

- Duke Energy is planning to replace the current 376 megawatt coal-fired power plant in Asheville with a new natural gas plant nearly twice the size. **The new plant would be connected to a new substation in Campobello, SC with 45 miles of new transmission lines and towers.**
- **Multiple routes are proposed through SC and Polk, Henderson and Buncombe Counties that would condemn property in 150' wide paths.** Duke has said they plan to choose a final route in October.
- **The transmission towers would stand 140' to 192' tall** and would cut through forests, farmlands, private property and communities, degrading the usefulness of the land.
- Even though the new natural gas plant would be cleaner than the old coal-fired plant, it appears to be much larger than needed, calling Duke's motives into question.*



How am I affected?

- **YOU COULD LOSE CONTROL OF YOUR LAND:** Private property on the transmission routes will be purchased or seized by Duke Energy through eminent domain.
- Our scenic mountain views and the cultural heritage of our land will be compromised; impacting local tourism, recreation and our economy.
- Use of land for agriculture will be limited. Herbicides will be applied to right-of-ways. Natural forests and habitats will be damaged and the lines could pollute local waters.
- **Duke customers will HAVE TO PAY for this \$1.1 billion dollar proposal through increases in our utility rates. Natural gas pollutes air and water near the site of extraction, along pipelines and contributes to global climate change.**



*Duke Energy's own planning documents show that the current coal plant is not used as efficiently and Duke's projections for growing energy demand appear grossly overstated.

Join the campaign to voice your concern! We're stronger together.

CAROLINALANDCOALITION.ORG – PROTECT OUR LAND

TAKE ACTION!

<p>Contact Utility Regulators and voice your concern!</p> <p>SEND A LETTER ONLINE:</p> <p>NC RESIDENTS Send a letter online at: bit.ly/NoDukeLines Send an email: Consumer.Services@psncuc.nc.gov Reference NC Docket E-2 SUB 1</p> <p>SC RESIDENTS Send a letter online at: bit.ly/NoDukeLinesSC Send an email: Jocelyn.Boyd@psc.sc.gov Reference SC Docket ND-2015-20-E</p>	<p>Write & Call your representatives!</p> <p>Ask them to oppose this plan!</p> <p>Send a letter to your lawmakers online now:</p> <p>NC residents:</p> <ul style="list-style-type: none">● bit.ly/NoDukeLines● bit.ly/NCreps <p>SC residents:</p> <ul style="list-style-type: none">● bit.ly/NoDukeLinesSC● bit.ly/repSC	<p>Join Carolina Land Coalition! Go to Local Meetings!</p> <p>Visit our website carolinalandcoalition.org – read the position statement, get project updates and spread the word!</p> <p>Find us on Facebook</p> <p>You help make this possible! Support our work at carolinalandcoalition.org/donate/ – 100% of your gift goes to CLC. Thanks for your support!</p> <p>We are stronger together!</p>
---	--	---

FACTS & FIGURES:

- **To date, Duke Energy has not provided adequate justification** for this \$1.1 billion dollar project, nor shown that their proposed plan is the best solution and best use of ratepayer dollars.
- **Duke Energy has offered no alternatives.** The public should be able to choose from investments in in energy efficiency, renewables, using existing right of ways or underground lines, or a smaller gas plant.
- **The public deserves a full and independent investigation. We need to account for all costs and impacts related to their plans including an evaluation of all the costs associated with the expansion including diminished property values, lost tourism revenues and lost environmental services.**
- **Duke should be sizing their facilities based on regional public need. NOT trying to profit off ratepayers.** Duke can oversize this project because by North Carolina law they are guaranteed a high rate of return on infrastructure projects. This is paid for by Duke’s ratepayers, YOU!
- **Duke calls this “modernization”, but it is outdated and dirty. Duke’s plans should at least include low cost, common sense options to reduce demand through energy efficiency.** For years, Duke has only cut .3% of energy use through efficiency programs. Utilities around the country routinely cut demand by 1% or more.
- **Duke should first increase their use of renewable energy and maximize energy efficiency in the region before building more polluting fossil fuel infrastructure.**

Join the campaign to voice your concern! We’re stronger together.

CAROLINALANDCOALITION.ORG – PROTECT OUR LAND